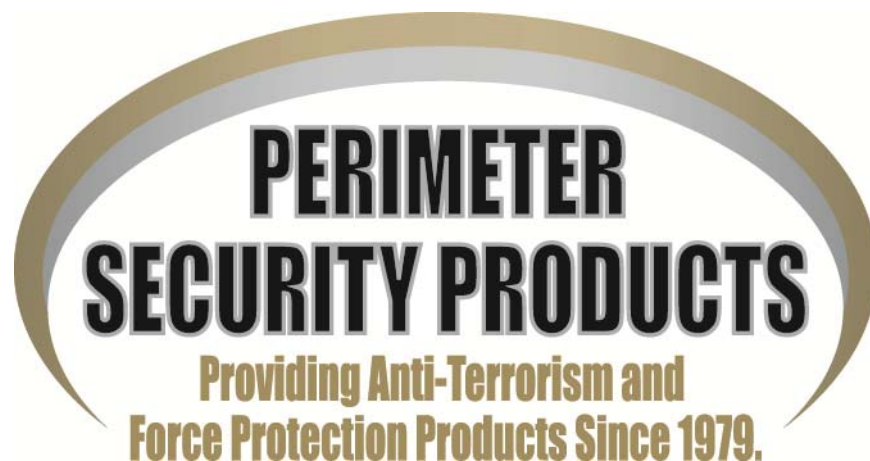


Perimeter Security Products

16' Urban Drop Arm Gate

Installation Instructions



PERIMETER SECURITY PRODUCTS
DIVISION OF SPIRIT OF AMERICA CORPORATION

260-432-7158 Phone 260-459-0929 Fax 800-860-2855 Toll-free www.soacorp.com

Perimeter Security Products

Contents

Components.....	3
Introduction.....	4
Preparation.....	4
Pivot Base Installation	5
Receiver Base Installation	5
Pivot Assembly Installation.....	6
Beam Assembly.....	6
Beam Installation.....	7
Final Base Adjustment.....	8
Counterweight Installation	9
Installation of the Urban Barriers	10
Installation Completed.....	11
Replacement Parts	12
Additional Comments	12

Note: Read the entire set of instructions prior to beginning the installation of the Urban Drop Arm Gate.

PROPRIETARY DATA THIS DOCUMENT AND THE INFORMATION DISCLOSED HEREIN ARE THE PROPERTY OF PERIMETER SECURITY PRODUCTS. NO PART OF THIS DOCUMENT IS TO BE REPRODUCED WITHOUT THE WRITTEN PERMISSION OF PERIMETER SECURITY PRODUCTS. NO INFORMATION DISCLOSED HEREIN IS TO BE TRANSMITTED TO ANOTHER OR USED FOR ANY PURPOSE OTHER THAN THAT FOR WHICH THIS DOCUMENT IS PROVIDED.

Perimeter Security Products

Components

The following items are shipped with the Urban Drop Arm Gate:

1. 1 – Pivot Base Assembly
2. 1 – Receiver Base Assembly
3. 1 – Pivot Assembly
4. 4 – Beam Sections
5. 3 – Beam Splices
6. 1 – Nose Piece
7. 11 – Weight Plates (One Spare)
8. 3 – Urban Barriers
9. Hardware - Misc
10. Tools – Misc

PROPRIETARY DATA THIS DOCUMENT AND THE INFORMATION DISCLOSED HEREIN ARE THE PROPERTY OF PERIMETER SECURITY PRODUCTS. NO PART OF THIS DOCUMENT IS TO BE REPRODUCED WITHOUT THE WRITTEN PERMISSION OF PERIMETER SECURITY PRODUCTS. NO INFORMATION DISCLOSED HEREIN IS TO BE TRANSMITTED TO ANOTHER OR USED FOR ANY PURPOSE OTHER THAN THAT FOR WHICH THIS DOCUMENT IS PROVIDED.

Perimeter Security Products

Introduction

The Urban Drop Arm Gate is designed to work with three of Perimeter Security Products Urban Terrorist Barricades as ballast. This makes the gate a non-permanent and movable installation. The product breaks down and can be shipped on a couple of pallets 4' x 8' or smaller.

The Urban Drop Arm Gate is balanced to provide positive stops yet is easily moveable by a single person as the operator.

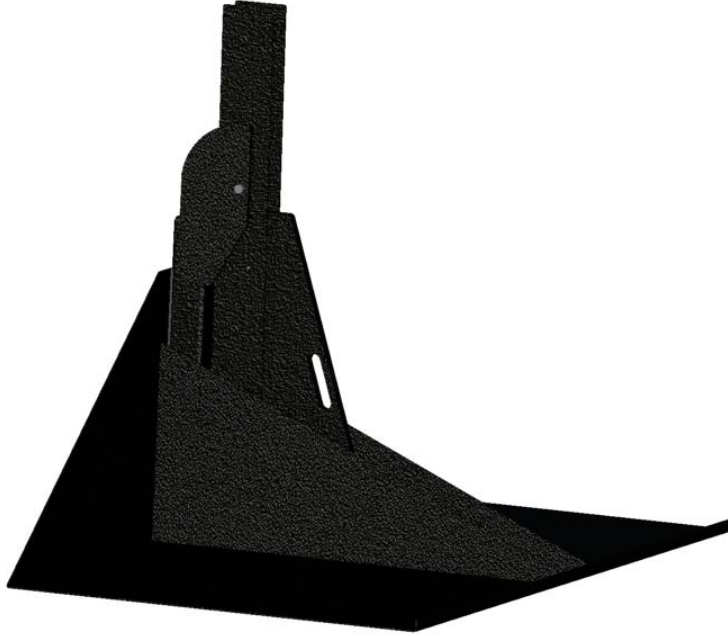
Preparation

The preparation for the install of this gate is quite simple. Choose where the gate is to be installed and level the areas where the bases will be placed. Choose the location for the Pivot Base Assembly. It will need a clear and level footprint of just over 4' x 8'. Directly across the travel area there needs to be a second leveled area that is just over 4' x 4'. Ideally these two areas have the same elevation so that the gate rests correctly and level in the closed position.

Un-package the components listed on page 3 to get ready for assembly.

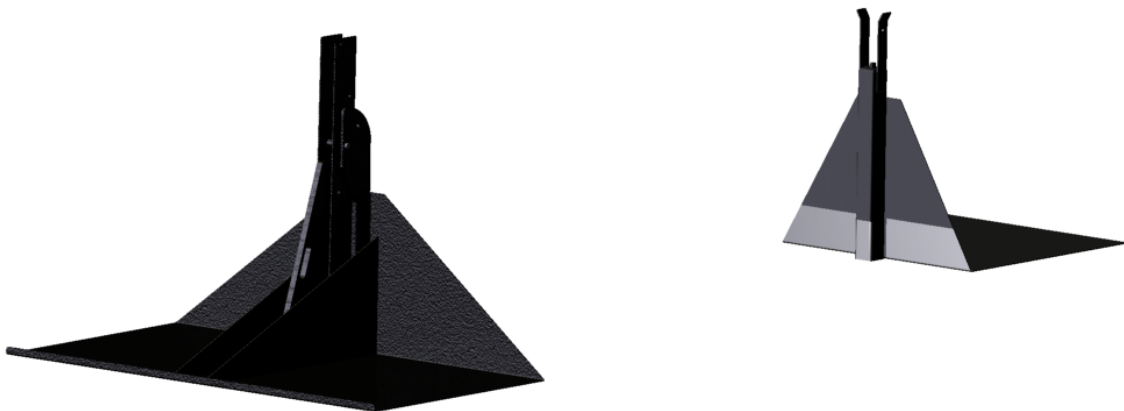
Pivot Base Installation

Place the Pivot Base Assembly with the trapezoidal surface facing the traffic lane.



Receiver Base Installation

The Receiver Base install is equally easy. Place the receiver on the opposite side of the traffic lane. This particular model is a 16 foot gate. The two bases should be 16 feet apart from the inside most edge of each base (the trapezoid shape on the pivot base to the tubing on the receiving base).



The two bases should be square to each other and the centerlines lined up.

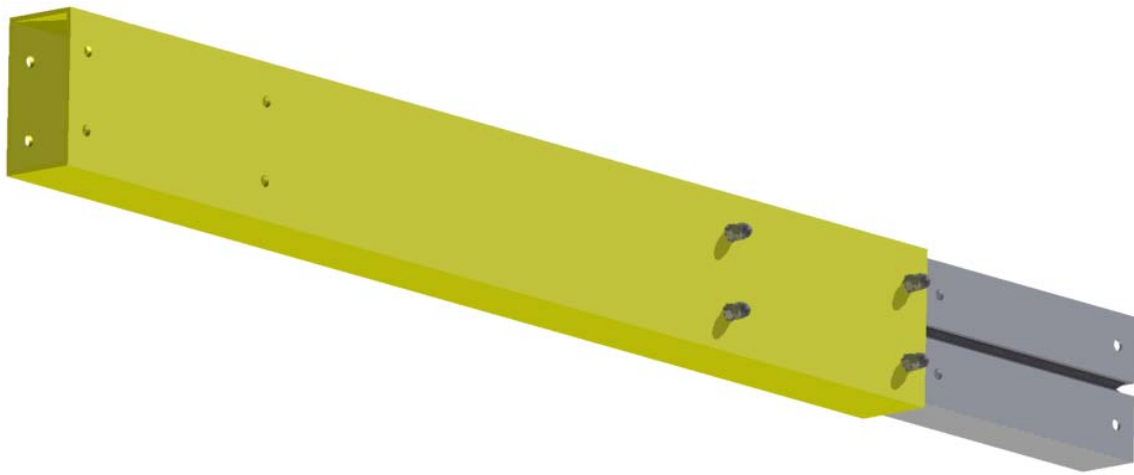
PROPRIETARY DATA THIS DOCUMENT AND THE INFORMATION DISCLOSED HEREIN ARE THE PROPERTY OF PERIMETER SECURITY PRODUCTS. NO PART OF THIS DOCUMENT IS TO BE REPRODUCED WITHOUT THE WRITTEN PERMISSION OF PERIMETER SECURITY PRODUCTS. NO INFORMATION DISCLOSED HEREIN IS TO BE TRANSMITTED TO ANOTHER OR USED FOR ANY PURPOSE OTHER THAN THAT FOR WHICH THIS DOCUMENT IS PROVIDED.

Pivot Assembly Installation

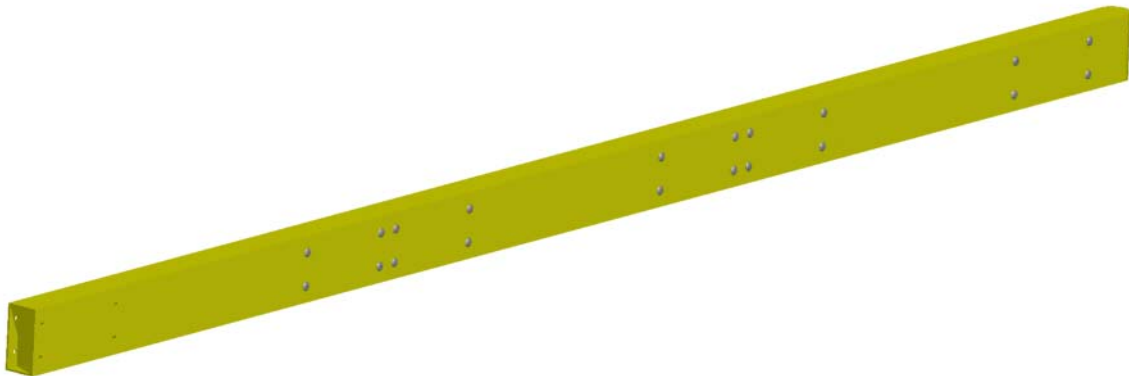
The pivot assembly is shipped pre-attached to the Pivot Base Assembly.

Beam Assembly

The beam will be assembled onto the pivot assembly (beam tail piece) which is now attached to the Pivot Base Assembly. Assemble one beam splice weldment into the open end of the pivot assembly using the supplied hardware as shown. Use the acorn nuts to cover the bolt ends. The image below shows the splice weldment in place with the hardware including the protective acorn nuts.

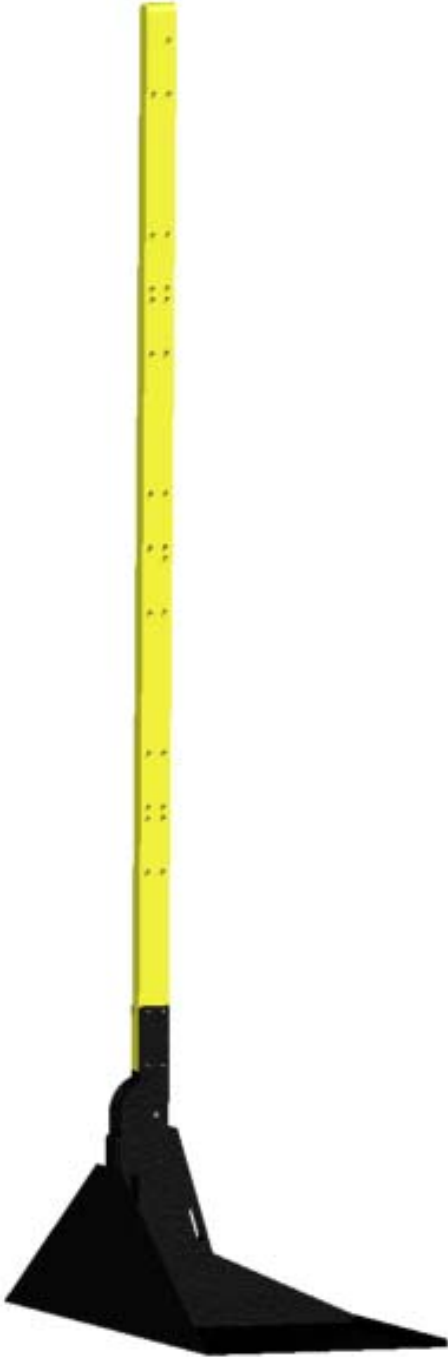


Continue the assembly adding three more gate sections, two more splices, and the tip.



Beam Installation

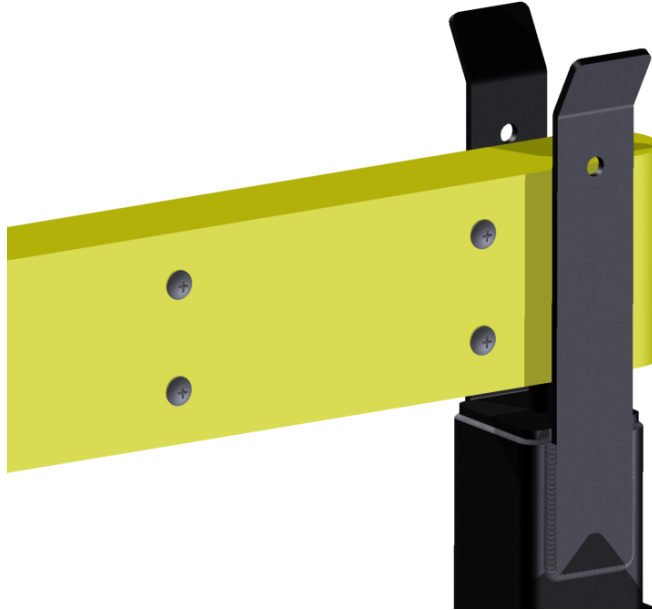
Now that the beam is assembled and with the pivot assembly locked in the open position, place the beam onto the pivot weldment and secure using the supplied hardware.



PROPRIETARY DATA THIS DOCUMENT AND THE INFORMATION DISCLOSED HEREIN ARE THE PROPERTY OF PERIMETER SECURITY PRODUCTS. NO PART OF THIS DOCUMENT IS TO BE REPRODUCED WITHOUT THE WRITTEN PERMISSION OF PERIMETER SECURITY PRODUCTS. NO INFORMATION DISCLOSED HEREIN IS TO BE TRANSMITTED TO ANOTHER OR USED FOR ANY PURPOSE OTHER THAN THAT FOR WHICH THIS DOCUMENT IS PROVIDED.

Final Base Adjustment

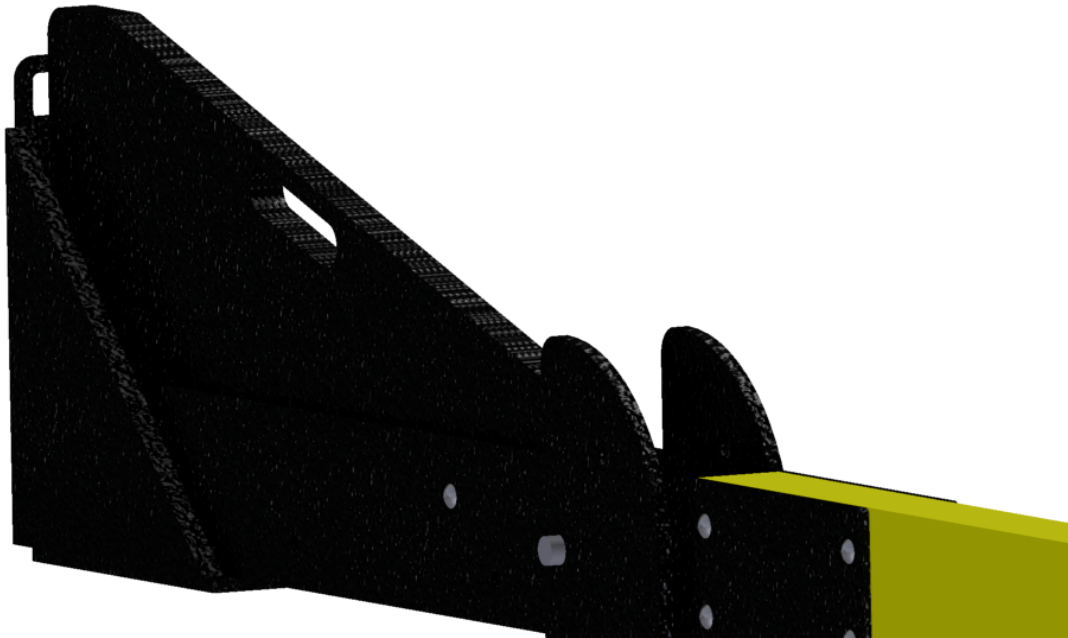
With the beam assembled, lower the beam into the receiving base assemblies cradle. Adjust the location of the receiving base as needed so that the beam moves in and out of the cradle easily. Go over the full beam to verify that all hardware is in place and tight.



PROPRIETARY DATA THIS DOCUMENT AND THE INFORMATION DISCLOSED HEREIN ARE THE PROPERTY OF PERIMETER SECURITY PRODUCTS. NO PART OF THIS DOCUMENT IS TO BE REPRODUCED WITHOUT THE WRITTEN PERMISSION OF PERIMETER SECURITY PRODUCTS. NO INFORMATION DISCLOSED HEREIN IS TO BE TRANSMITTED TO ANOTHER OR USED FOR ANY PURPOSE OTHER THAN THAT FOR WHICH THIS DOCUMENT IS PROVIDED.

Counterweight Installation

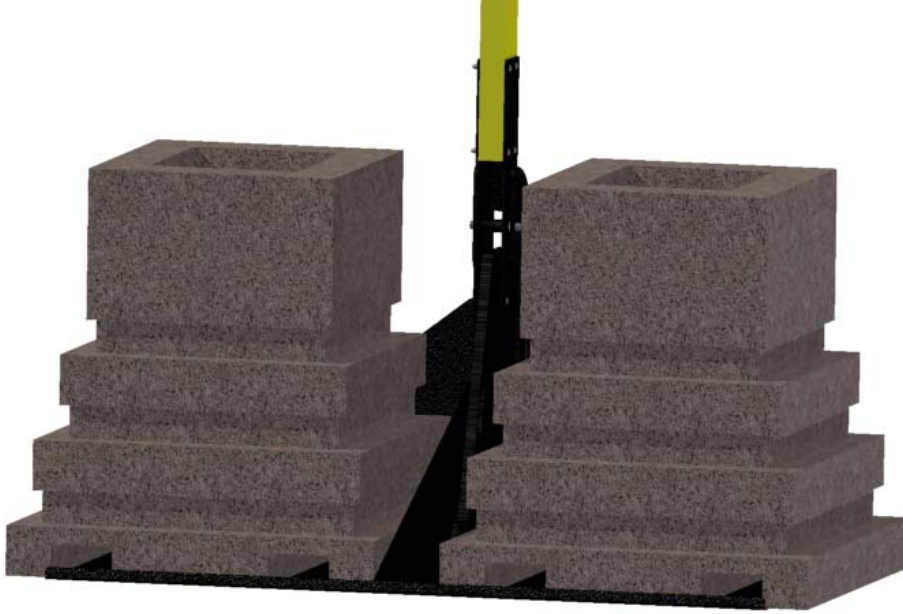
The counterweights came installed in the tail of the gate's pivot assembly. An extra plate was shipped with the unit. Remove one plate and test the balance. It may be desired to remove an additional plate to give more weight on the nose. The plates have slots in the bottom of the plate to help locate them and to hold them in place. To remove a plate, remove the 3/8-16 x 4 bolt and nut that runs through the pivot assembly and plates. The bolt can be seen here near the front of the plates.



Once the beam is balanced as desired, replace the 3/8 hardware to secure the weights.

Installation of the Urban Barriers

Place two of the urban barriers on the Pivot Base Assembly as shown.



Note the orientation of the Urban Barriers on the base plate. The fork pockets on the barriers need to be oriented parallel to the beam to fit correctly on the base. Place the remaining barrier on the Receiver Base Assembly as shown. Orient the fork pockets in the same manner as the pivot assembly.



Fill the urban barriers with water to provide the needed ballast.

PROPRIETARY DATA THIS DOCUMENT AND THE INFORMATION DISCLOSED HEREIN ARE THE PROPERTY OF PERIMETER SECURITY PRODUCTS. NO PART OF THIS DOCUMENT IS TO BE REPRODUCED WITHOUT THE WRITTEN PERMISSION OF PERIMETER SECURITY PRODUCTS. NO INFORMATION DISCLOSED HEREIN IS TO BE TRANSMITTED TO ANOTHER OR USED FOR ANY PURPOSE OTHER THAN THAT FOR WHICH THIS DOCUMENT IS PROVIDED.

Installation Completed

The assembly of the 16' Urban Drop Arm Gate is now complete. The following image shows a gate in the open orientation. The locking pins may be used to lock the gate in the open or closed orientation. It is recommended that when the gate is in the open orientation that the lock pin be added to hold it there to avoid the gate coming down accidentally.



PROPRIETARY DATA THIS DOCUMENT AND THE INFORMATION DISCLOSED HEREIN ARE THE PROPERTY OF PERIMETER SECURITY PRODUCTS. NO PART OF THIS DOCUMENT IS TO BE REPRODUCED WITHOUT THE WRITTEN PERMISSION OF PERIMETER SECURITY PRODUCTS. NO INFORMATION DISCLOSED HEREIN IS TO BE TRANSMITTED TO ANOTHER OR USED FOR ANY PURPOSE OTHER THAN THAT FOR WHICH THIS DOCUMENT IS PROVIDED.

Perimeter Security Products

Replacement Parts

Perimeter Security Products can provide replacement parts for the Urban Drop Arm Gate if needed.

Please contact Perimeter Security Products with the contact information above for pricing on these items.

Additional Comments

Congratulations on the completion of the installation of your Urban Drop Arm Gate. Your troops, equipment, or supplies are now able to be better protected. Through this installation manual we have provided a more or less step by step method to complete the installation. Understanding these methods is very important for the quickest and most functional implementation.

If you have specific questions regarding the installation of the Urban Drop Arm Gate, you may contact Perimeter Security Products at the following:

PERIMETER SECURITY PRODUCTS

DIVISION OF SPIRIT OF AMERICA CORPORATION

260-432-7158 Phone 260-459-0929 Fax 800-860-2855 Toll-free

www.soacorp.com

PROPRIETARY DATA THIS DOCUMENT AND THE INFORMATION DISCLOSED HEREIN ARE THE PROPERTY OF PERIMETER SECURITY PRODUCTS. NO PART OF THIS DOCUMENT IS TO BE REPRODUCED WITHOUT THE WRITTEN PERMISSION OF PERIMETER SECURITY PRODUCTS. NO INFORMATION DISCLOSED HEREIN IS TO BE TRANSMITTED TO ANOTHER OR USED FOR ANY PURPOSE OTHER THAN THAT FOR WHICH THIS DOCUMENT IS PROVIDED.